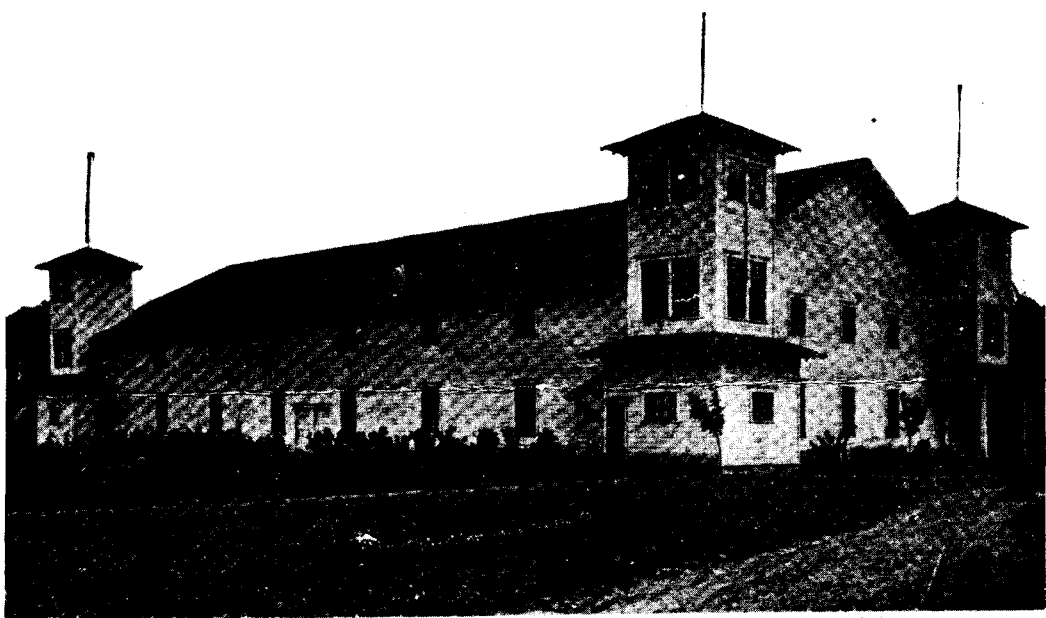


Jan 1976

# YAMHILL COUNTY HISTORICAL SOCIETY



Auditorium, McMinnville, Ore.

17952

Pictured above is the McMinnville Auditorium or Pavilion as it was commonly called. It was located in the city park where the swimming pool now stands. For years the county fair was held there and in the late teens the McMinnville High School used it as a gymnasium. It was torn down sometime in the early twenties. We would appreciate any information concerning this auditorium that any members might be able to supply.

## YAMHILL COUNTY (IN 1916)

by  
Ruth Stoller

In 1916 the Passenger Department of the Southern Pacific Company put out a booklet called OREGON FOR THE SETTLER. No doubt it was distributed east of the Rocky Mountains in hopes that it would attract more settlers to the West Coast where the Southern Pacific had its tracks. The booklet is full of many interesting things and among them is a description of Yamhill county:

### YAMHILL COUNTY

Yamhill county in the Willamette Valley has an area of 714 square miles. It includes the watershed of the Yamhill River as well as the Chehalem River. It is one of the most fertile counties in the West. It was settled in the early forties and originally it was the bread basket of the Willamette valley, raising much of the grain raised here in the early days. Now, however, the one-time grain fields have been planted to prune orchards, berry patches and walnut groves. McMinnville is its county seat. The county ranks first in the production of walnuts and second in prunes, third in cherries, quinces, raspberries and loganberries. In many places the soil is 40 feet deep and it is rich in potash and is peculiarly adapted to the raising of fruits and nuts. Within the county there are 20,000 acres of logged-off lands whose average price is \$25.00 per acre. Dairying is carried on extensively within the county and large numbers of cattle, hogs, sheep and goats are raised.

One of the industries making rapid strides in Yamhill county is the growing of walnuts. With a careful selection of the proper varieties and an equally careful selection of the location of the grove with a view to the depth and character of the soil, drainage, air drainage and other features essential to the growth and development of walnuts splendid success can be achieved with walnuts in Yamhill county.

EVENT: January Meeting  
When: January 13, 1976 7:00 P.M.  
WHERE: Amity Grade School Cafeteria  
SPEAKER: Tony Meeker, speaking on the BiCentennial

Come bring a friend, potluck at 7:00 meeting at 8:00 P.M.

\*\*\*\*\*

#### DUES

As of January 1 all dues will be due. If you have not paid your dues for 1976 why not take care of it right away. Dues are \$2.00 per person. \$4.00 for man and wife. For those of you who pay dues to the Oregon State Historical Society they are up 50¢ this year, now \$7.50. All dues both county and state should be sent to:

Mrs. Florence M. Bridenstine  
1029 East 4 St.  
McMinnville, Ore. 97128

Make all checks payable to: YAMHILL COUNTY HISTORICAL SOCIETY.

\*\*\*\*\*

#### MUSEUM NEWS

Hope you all had a Merry Christmas and have a fine New Year.

Our new electric furnace is in and working fine these cold days. We have been busy with school tours and scout troops. We welcome them all. By appointment call 472-7935. Several ladies clubs are scheduled for January and February.

Don't forget our "WHITE ELEPHANT TABLE". We earned \$27.00 for our fireproof safe. We have to raise \$175 so keep the goodies coming in. It's fun too.

We had a gift of \$175 from members in Portland for the safe. Many many thanks to Mr. & Mrs. J.V. Dyer. Thanks to John Sitton and son for delivering from Portland to the Museum. It saved us \$20. Many thanks to them.

We are open Saturday and Sunday, 1:00 to 4:30.

Roma Sitton