

The West Side

Newsletter and Journal of the Yamhill County Historical Society

Summer 1997

WAGON (and Building), HO!!!

Shown at right is the structure housing the replica of an 1843 covered wagon built by volunteers as part of the 1993 Oregon Trail sesquicentennial celebration. Since then the wagon has been stored in this building on the county fair grounds and occasionally taken out to visit schools under the auspices of the Educational Service District. After considerable discussion, all parties involved have agreed in principle to move wagon and building to the Lafayette city park adjacent to the YCHS museums with the Society having custody. These preliminaries out of the way, the task of gaining community support for the move remains (several organizations have already expressed interest in helping).

All things considered, relocation of the wagon to Lafayette will make it much more available to the public (one side of the building is nearly all windows allowing for viewing at any time). The new site will also provide convenient access for transporting the wagon out to the schools as well as offering an additional attraction for classroom visits to the YCHS museum. Our talented educators, Lois Brooks and Twila Byrnes, are already at work planning a suitable presentation for the students.



There's still a lot of trail to be covered before the wagon reaches a new home in Lafayette and it will likely take a while to reach the destination, but we're now getting ready to harness up.

SUMMER GREETINGS (and more) FROM THE PRESIDENT

Driving through Yamhill County at this time of the year is such a pleasure. The countryside is several shades of green with cattle grazing, etc. The towns have well cared for yards and hanging flower baskets. This is a great place to live.

Have really missed Elma Shuck. We are so used to her smiling face and presence at the museum every Saturday and at our meetings. Am glad to hear her recovery is coming right along.

I would love to hear from our members about their spring events and summer plans. You do such interesting thing things and it would be fun to put them in the newsletter.

Over the past few weeks I feel like I've traveled a bit of the Oregon Trail in my efforts to obtain the Heritage Center covered wagon and building that is now located at the Yamhill County Fairgrounds. There still remains a lot of paperwork, but all involved have agreed to the move. Now all we need is site preparation and the actual move - Just minor details! I'm very excited about this addition to our facilities.

Don't forget about the key and door change at the church. Also take a look at the new addition to the log museum kitchen. Harry and Twila Byrnes donated a beautiful new microwave. Now the kitchen is complete and ready for use.

WORK DAY CONTINUES TO BE POORLY ATTENDED.
Just the faithful few you can always depend upon and appreciate.

If we are to continue with the planned programs and activities we must have volunteers. Even if it is just for an hour or two, your help is needed. I have a lot of energy and enthusiasm for the Society and the museum. I feel there is definitely a need for what we do and we must continue to inform and educate the county of our existence. For two and a half years I have tried to carry this out. Without input or assistance from more of the membership I am getting a little discouraged. We have old and new members and a very hard working and supportive board who are contributing to this purpose but we can't do this alone. Most of you know I work full time and have an extended family to care for, therefore my time is limited.

HOW CAN YOU HELP? GET NEW MEMBERS - CALL US WITH SUGGESTIONS - ATTEND MEETINGS - OFFER YOUR HELP - LET US KNOW IF YOU DO OR DO NOT SUPPORT THE BOARD AND VOLUNTEERS IN WHAT WE ARE TRYING TO DO. WE NEED TO HEAR FROM YOU!!

It seems like I spend a lot of time nagging and complaining but always keep in mind - **YOU ARE THE BEST GROUP OF PEOPLE I HAVE EVER WORKED WITH AND I LOVE YOU ALL!!**

Respectfully,
Shirley Venhaus

QUILT DRAWING NEARS

All are reminded a winner of the hand made quilt will be determined during the YCHS Heritage Recycling sale on August 23rd. If you have not yet purchased a ticket or two or would maybe be like to enhance your chances, tickets are still available at \$1.00 each or six for \$5.00. Contact Ruth Crawford.

ANOTHER WAY TO HELP

For a number of reasons some members are unable to attend work days or other special activities. However there is a way to assist at your own convenience: Become part of a telephone reminder committee. Call Shirley at 472-7328 for details.

.....The Editor

The Yamhill County Historical Society is a nonprofit tax exempt educational and public service corporation established to protect, preserve and share the history and heritage of Yamhill County

OFFICERS - 1997**President**

Shirley Venhaus
472-7328

VP/Program

Barbara Knutson
843-2069

Secretary

Betty Baltzell
472-7746

Treasurer

Don Crawford
434-9843

Financial Secretary

Lila Jackson
472-8510

Corres. Secretary

Delores Robertson
538-0767

Board of Directors

James Vincent
472-7239

John White
665-5376

Ed Roghair
472-6909

Robert Kuykendall
662-3354

Volunteer Coordinator

Maxine Williams
472-4547

Librarian

Olive Johnson
472-6070

Newsletter

John White
665-5376

Publicity

Elaine Rohse
472-6827

MUSEUM HOURS

June 1 to Aug 31:
Wed-Sun 1 to 4 PM

Sept 1 to May 31:
Sat-Sun 1 to 4 PM
or
By Appointment

ANNUAL DUES

\$7.50 per person

Mail to:
Financial Secty
2430 North Baker
McMinnville OR

97128

PRESENTING THE CRAWFORDS

Don and Ruth are relatively new members of the Society as well as being two of our most reliable volunteers. They moved to McMinnville in 1994 and at a Newcomers Club meeting, met Shirley Venhaus who recruited them for the YCHS.

Don, who is presently the Society's Treasurer, has family connections to the area dating back as far as 1851 when P.V. Crawford came to the county. Oliver H. Adams of early McMinnville is also an ancestor. In addition to keeping track of our finances, Don set up the new computer and with it is busy organizing genealogical and other records.

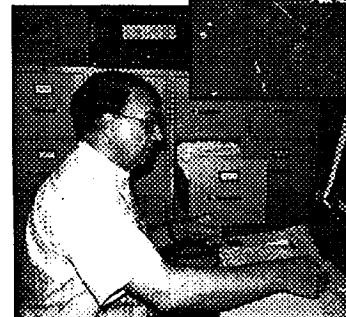
Ruth, having a natural interest, became a Master Gardener this past year. Using this knowledge and skill, she is responsible for the beautiful plantings all around the museum grounds, spending many hours watering and caring for them.

Both Crawfords serve as hosts one Sunday each month at the museum in addition to these other activities. They are a real asset to the Society.

.....Maxine Williams



Above, Ruth is seen planting flowers at the Miller Log Museum. At left, Don is using the YCHS computer to index

**PICNIC SET FOR AMITY AUGUST 2nd**

The annual YCHS potluck picnic will be held at 12:00 noon Saturday August 2nd in the Amity City Park located just west of Hwy 99W on Fifth Street (Bellevue-Hopewell Hwy). As always, bring your own table service in addition to a potluck offering and remember, guests are always welcome.

NEW MEMBERS

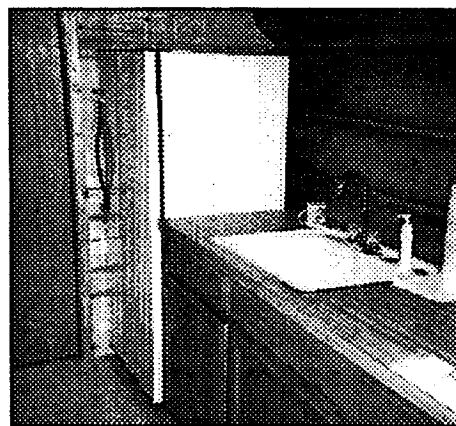
We welcome the following new members and hope to see them soon at YCHS activities:

Karen T. Lobb - Newberg

Karen I Sitton-Saxberg - McMinnville

MORE SALE MATERIAL WANTED

The more donated items for the August 23rd Heritage Recycling Sale we receive, the greater the net proceeds to be realized by YCHS. Remember, this is our only major fund-raiser for 1997. Just about any old thing lying about the house will do as long as it is in clean and serviceable condition. Drop your donations off at the museum during open hours and while there, maybe lend a helping hand in preparing for the sale.

**TREASURE HUNT AT THE MUSEUM ? YOU BET !**

What fun for Ms. Bacon's 4th graders—and us.

On May 13th this class arrived at noon with sack lunch in hand. Fortunately the weather cooperated, so sitting on steps or blankets on the grass 18 children, teacher and mother/drivers ate a tasty lunch, after which, treasure list ready, the children began to search for the items Ms. Bacon had requested they find.

Ed Roghair was again in charge of the barn, Shirley McDaniel did duty in the log building and Twila Byrnes in the church.

How excited the children were when they checked off items and discovered how heavy a Dutch oven is and what a spider pan looked like. They loved the huge Dick & Jane reader. However, it was not until the third group was finishing their tour that we found the last artifact, a Chinese neck yoke. So you see, we all learned this day.

We are always happy to have polite, well behaved and motivated children visit the museum as were these from McMinnville's St. James School

.....Twila Byrnes

LOG MUSEUM KITCHEN COMPLETE

Donations of a microwave oven, refrigerator and hot plate (see recent 'President's Letters') now give the YCHS a fully functioning kitchen facility in the Miller Log Museum. Shown at the left is the sink and a portion of the cabinets installed thanks to the Roma Sitton memorial fund, in whose honor the kitchen will be named, and the generosity of Elma Shuck.

IN MEMORIAM

It is with regret we mark the recent passing of two respected YCHS members.

**Helen Horlyk
John Rowland**

Remember, A Red Dot on Your Address Label Means Your Dues are Due

MOVING THE MAIL IN 1851

by John White

Mail from the "States" bound for settlers in the new Oregon Territory arrived at Astoria semi-monthly via coastal packet and from there conveyed inland for distribution along with mail generated within the region. The following advertisement for contractors to accomplish the latter was placed in the December 4 1850 issue of the Portland Oregonian. (Those believing convoluted verbiage in government correspondence to be a product of recent times should pay particular attention to the last two paragraphs).

Special Agency
Post Office Department
Portland
Nov. 25, 1850

Sealed Proposals will be received at this office, until the 25th day of December next, at 8 a.m., for transporting the United States Mails, on the following routes, for the term of one year, commencing on the 1st of January next.

From Astoria, Clatsop county, on the 1st and 15th, at 8 a.m., and arrive at Oregon City on the 4th and 18th p.m., via St. Helens, Portland, Milwaukie, and back - leaving Oregon City on 12th and 22nd, 8 a.m., arrive at Astoria 14th and 24th, 8 p.m.; semi-monthly, (by Act of Congress).

1. From Oregon City, leaving Mondays 8 a.m. and arrive at Salem Tuesdays 8 a.m., and back Saturday 6 a.m., and arrive Oregon City same day 9 p.m., weekly.

2. From Salem Tuesdays 9 a.m., via Syracuse, Lynn county, Keys, Lynn County, Spalding's, Lynn county, Jacob Spores', Lynn county, Pleasant Hill, Benton county, to E.F. Skinner's, Benton county, at 8 p.m. Wednesdays, and back, Thursdays 8 a.m., arriving Salem on Fridays 9 p.m., weekly.

3. From Syracuse Tuesday 1 p.m., via Albany, Lynn county, to Marysville, Benton County, Wednesday noon, and back same day 1 p.m., and arrive at Syracuse 1 p.m., weekly.

4. From Portland 6 a.m., Saturdays, via Harris' Ferry, Washington county to Lafayette, Yam Hill county, same day 9 p.m., and back on Fridays 6 a.m., and arrive same day 9 p.m., weekly.

5. From Portland Saturdays 6 a.m., via Hillsborough, Washington county, North Yam Hill, Yam Hill county, South Yam Hill, Yam Hill County, to Nesmith's mills, in Polk county, Mondays 12 noon, and back on Thursday 6 a.m., arriving at Portland Friday 9 p.m., weekly.

6. From Portland 8 a.m., via Milwaukie to Oregon City 12 noon, and back 4 p.m., arriving at Portland same days semi-monthly intermediate, alternate to the trips on the route from Astoria to Oregon City, on the 14th and 25th of each month, thus making, with the semi-monthly trips, four trips per month.

7. From St. Helens 7th and 19th 8 a.m. via mouth of Cowlitz River, Cowlitz, to Nisqually 8th and 22nd, 8 p.m., and back

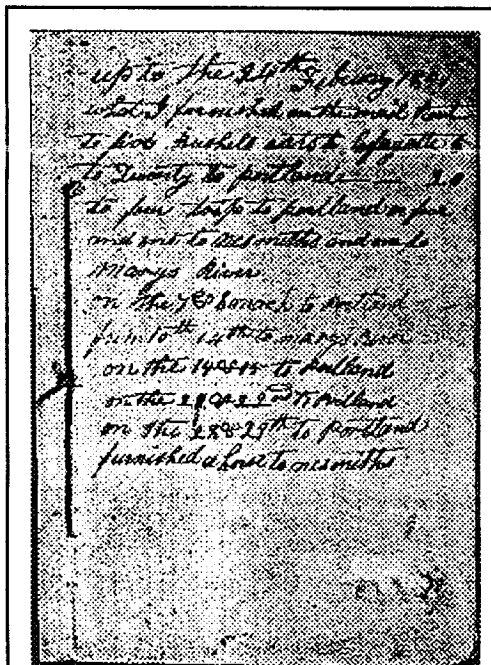
9th and 23rd, 8 a.m. and arrive 12th and 20th, 8 p.m., of each month, semi-monthly.

The route from Astoria being authorized by act of Congress, will be let to the lowest bidder, as per schedule. The temporary routes numbered 1,2,3,4,5,6,7, in two classes, agreeably to the instructions of the department.

Numbers 1,4 and 6, will be of the first class, and will be let to the lowest bidder, if it comes within the limits of my instructions, at a given ratio for one half the trips, semi-monthly, the other half, and those 2,3,5,7, the second class, to the lowest bidder, provided they will come within the limits of the net proceeds of the offices supplied; in all classes, however, reserving the right of discontinuing any contract, at any time, by order of the department, or the agent is satisfied the same may be necessary, by compliance being made with the contract pro rata, for all services rendered. All proposals should specify the times of conveyance per week and from points and distance, with the names of surety to the performance of the services to be performed - this being required by law.

N.B.: Bids on any of the second class of temporary routes will be considered, if they begin or terminate at either end of the same, and include any part of the whole, between two offices. The determination of the accepted bids will be at 4 o'clock p.m., on 25th December, 1850.

D. H. Lowndale
Postal Agent
P.O. Department, O.T.



Shown above is the page in Samuel Laughlin's day book noting goods supplied for the Portland/Yam Hill/Nesmith's mail route (No. 5) for the period January through March 1851:

Up to the 24th February 1851 what I furnished on the mail route (sic)
to five bushels oats to Lafayette — 5
to twenty to Portland ————— 20
to four trip to Portland or five and one to Nesmith's and one to Mary's River
On the 7 & 8 March to Portland from 10th & 14th to Mary's River on the 14 & 15 to Portland on the 21 & 22nd to Portland on the 28 & 29th to Portland

The YCHS museum at Lafayette has on display the day book of Samuel Laughlin, a pioneer 1847 settler in the Wapato Valley to the north and east of today's town of Yamhill. He was the successful bidder for route Number 5 as described in the foregoing advertisement, keeping track of his trips and goods furnished for the route in this booklet.

Addendum:

Putting some of the points along the routes traversing Yamhill County (Numbers 4 & 5) in perspective:

"Nesmith's Mill" was located on Rickreal Creek about 3 miles east of today's Dallas.

"Mary's River" or "Marysville" is now Corvallis

"South Yam Hill" refers to the plain lying between present day Amity and Bellevue.

"Harris' Ferry" was on the Tualatin River about 2 miles upstream from where the town of Tualatin is now located.

-o-

Since 1960

Lafayette OR 97127

P.O. Box 484

YAMHILL COUNTY HISTORICAL SOCIETY

Non-Profit
Organization
U.S. Postage
PAID
Permit #3
Lafayette Oregon

YAMHILL COUNTY HISTORICAL SOCIETY

Summer 1997 - Calendar of Events

Tuesday - July 8th - 1:00 PM

Board of Directors - Miller Log Museum - Lafayette

Friday - July 11th - 9:00 AM

Clean Up Day - Museums - Lafayette

Saturday - August 2nd - 12:00 Noon

YCHS Annual Picnic - Amity City Park (See page 2 for Details)

Tuesday - August 12th - 1:00 PM

Board of Directors - Miller Log Museum - Lafayette

Thursday & Friday - August 21st & 22nd - 9:00 AM

Preparation for Rummage Sale (Set-up, Pricing, etc.) - Museums - Lafayette

Saturday - August 23rd - 10:00 AM to 4:00 PM

Heritage Recycling Rummage Sale - YCHS - Lafayette

For those unable to attend the Clean Up or Sale Preparation days, or anyone just wishing to offer a helping hand, the museums will be open every Saturday morning from 10:00 AM on to sort, clean, price and prepare Heritage Recycling material for sale.